



User Instructions

The HANDY-LOK Closure for the GLOVE BAG

This simple device for closing the equipment sleeve is included in each box of GLOVE BAG. It has two parts – a base and a flexible Spline. To facilitate shipping, the Base for the larger models of GLOVE BAG is supplied in sections. The underneath surface of all Base sections is coated with a pressure-sensitive adhesive which will be discussed later.

Directions For Use

As the first step place the Base under the GLOVE BAG sleeve at the place where you want to close it. Then take the Spline and, starting at one end of the base, press the Spline down, forcing the sleeve firmly into the channel. Continue along the length of the Closure – much like sealing a food bag.

The Adhesive Backing Option*

If you remove the paper from the adhesive coating on the base piece, and then press the closure against your bench or table top, you can anchor the GLOVE BAG to the surface – but note the caution at the bottom of this page.

Sometimes two closures may be used on one sleeve. Close the sleeve with one and use a second, with the adhesive surface exposed, a few inches away as an anchor.

***Caution:** Be aware that pressure adhesives may damage many finishes. Also, adhesive coatings, if left in place too long, may become hard to remove.



User Instructions

The HANDY-LOK Closure for the GLOVE BAG

How to Assemble HANDY-LOK for Large GLOVE BAG Models

For model X-27-17 and X-27-27 there will be two base sections and one 3-inch flat connector piece in the box. For X-37-37, there are three Base sections and two 3-inch connectors. To assemble them use either Method (1) or Method (2) below.

Method (1) - Peel off about an inch and a half of the protective paper from the bottom of the adjoining ends of two Base strips, exposing the adhesive surface. Now press a connector onto the end of one strip, leaving about half of its length protruding beyond the end. Butt the other Base piece against it, aligning the channels. When the two sections are in the correct position, press them down firmly on the connecting piece and the assembly is complete.

HANDY-LOK closure for GLOVE BAG model X-37-37, comes in three sections but essentially the same assembly/procedure is followed, except that two connectors, instead of only one, are required. A convenient technique is to attach a connector on each end of the centerpiece before lining up the three base pieces.

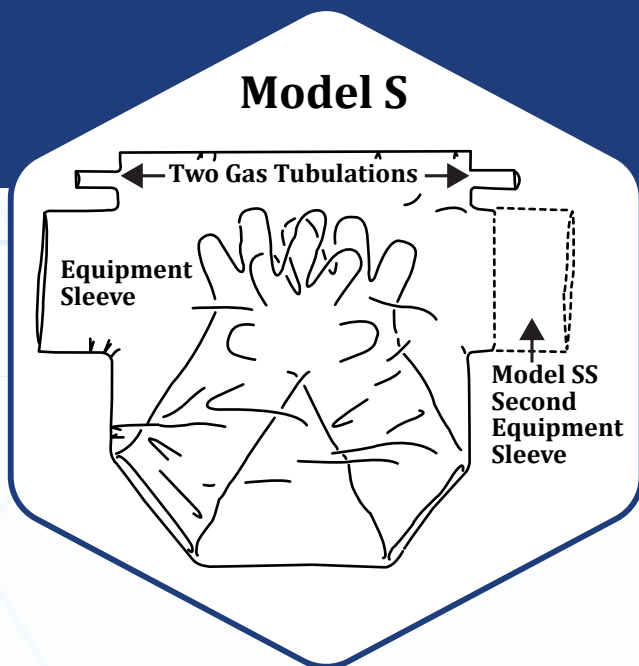
Method (2) - This alternate procedure does not use the connectors. Instead the protective paper is stripped from the entire underneath surface of the base pieces and they are lined up, end-to-end, and simply pressed into position on the bench top. (Remember the Caution below.)

***Caution:** Be aware that pressure adhesives may damage many finishes. Also, adhesive coatings, if left in place too long, may become hard to remove.

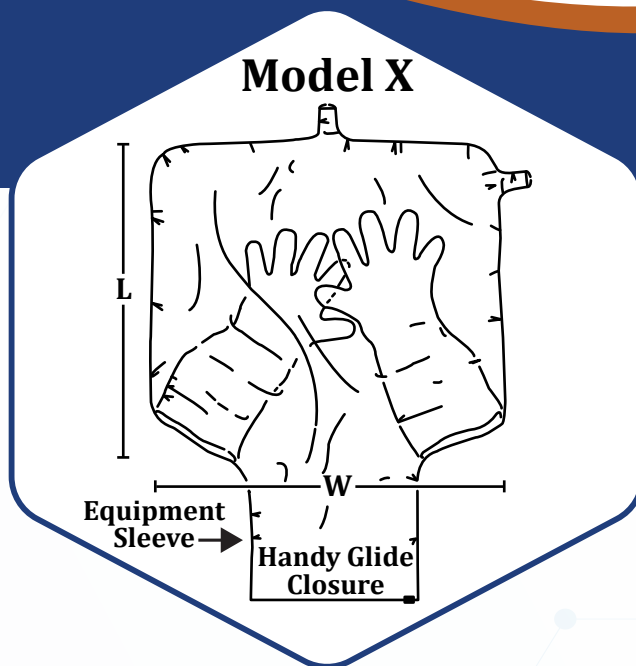


Handy-Glide Closure Glovebag

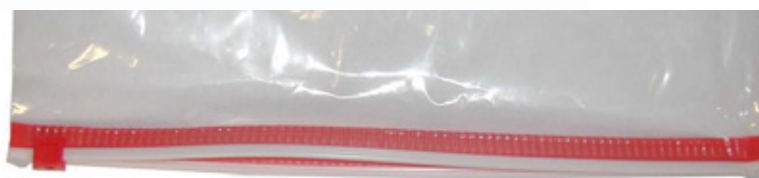
Model S



Model X



Handy-Glide Closure



APPLICATIONS

Botany
 Emergency Isolation
 Field Sampling
 Forensics
 Mailrooms
 Police Departments
 Sensitive Chemicals
 Schools
 & many other possibilities



User Instructions

The HANDY-LOK Closure for the GLOVE BAG

Convenient - It is used like a rigid glove box but has much greater flexibility. It is made of 2.5 mil thick polyethylene, with integral gloves. Equipment sleeve and the bag are then inflated.

Disposable - It is economical enough to be used once and discarded, if contaminated, but it's durable and it can be used over and over if desired.

Versatile - GLOVE BAG™ is great for keeping air-sensitive materials from contact with air or moisture. Use it whenever an inert atmosphere is needed in reactions or in handling reagents.

Economical - Even if you have a rigid glove box in your lab, consider the GLOVE BAG™. It can be purged faster than a glove box, with less gas, and can be easily adapted to fit your special needs. GLOVE BAG™ can facilitate any work you are doing with air-sensitive materials.

GLOVE BAG

Inflatable Glove Chamber with Handy-Glide Closure

Each bag comes with a tubing connector, and 1 pair of cotton gloves

Model	Inflated Work Space W x L x H	Equip. Sleeve Width	Ship. Wt.
108D X-17-17HG	17" X 17" X 11"	10"	1 lb
108D X-27-17HG	27" X 17" X 12"	18-3/4"	1 lb
108D X-27-27HG	27" X 27" X 15"	22-1/2"	1 lb
108D X-37-27-HG	37" X 27" X 18"	33-1/2"	1 lb
108D X-37-37HG	37" X 37" X 25"	33-1/2"	1 lb
108D X-34-34HG	34" X 34" X 23" (4-Hand)	28"	1 lb
108D S-20-20HG	20" X 20" X 12"	10"	1 lb
108D S-30-20HG	30" X 20" X 14"	10"	1 lb
108D SS-20-20HG	20" X 20" X 12"	10"	1 lb
108D SS-30-20HG	30" X 20" X 14"	10"	1 lb

Airfiltronix/Glas-Col, LLC

711 Hulman Street P.O. Box 2128, Terre Haute, IN 47802 0128 USA

Phone: (812) 235-6167 • Fax: (812) 234-6975

Email: pinnacle@glascol.com

www.glascol.com

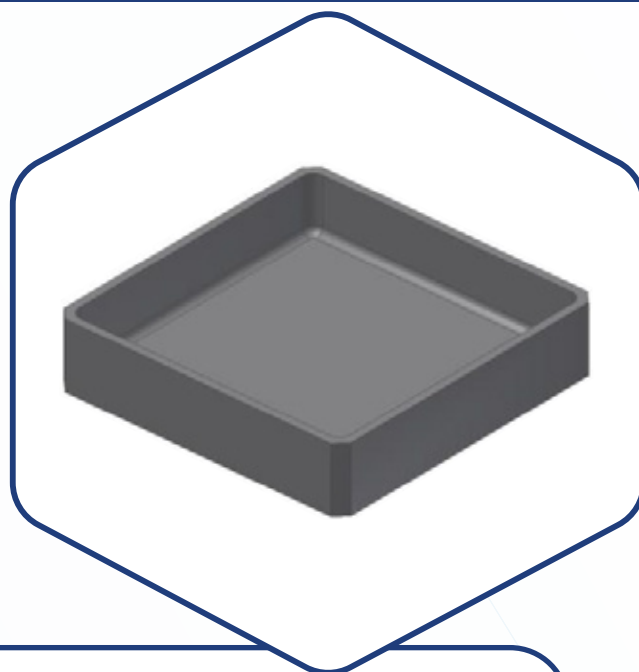


User Instructions

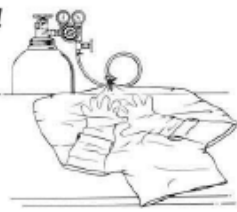
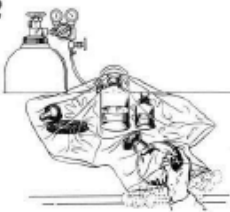


The HANDY-LOK Closure for the GLOVE BAG

Polypropylene Spill Trays

Model	Dimensions W x L x H	Ship. Wt.
108D ST10	14" X 10" X 1"	1 lb
108D ST20	14" X 20" X 1"	1 lb
108D ST24	24" X 24" X 1"	1 lb



GLOVE BAG is so easy to use . . .

<p>1</p>  <p>Connect GLOVE BAG to a source of inert gas, using the plastic coupler provided, and a length of tubing.</p>	<p>2</p>  <p>Purge and insert your equipment. There's lots of room inside for your apparatus plus accessories.</p>	<p>3</p>  <p>Close using the Handy-Glide closure. Inflate the GLOVE BAG and you're set to work</p>	<p>4</p>  <p>When you have finished, GLOVE BAG can be stored for further use, or, if contaminated, thrown away.</p>
---------------------------------------------------------------------------------------------------------------------------------------------------------------------------------------------------------------------------	--------------------------------------------------------------------------------------------------------------------------------------------------------------------------------------------------------------	------------------------------------------------------------------------------------------------------------------------------------------------------------------------------------------------------	------------------------------------------------------------------------------------------------------------------------------------------------------------------------------------------------------------------------